

# SYKEDUP

Volume 16 / Issue 1 / 2008



Sykes Pontoon Mounted Pumpset at a Queensland mine, filling a 110,000 litre truck in only five minutes  
– read more inside >>



## IN THIS ISSUE

- Grindex in New Zealand
- Sykes in Africa
- Distributor of the Year



[sykesgroup.com](http://sykesgroup.com)

# SYKES HAVE THE SOLUTION

**COVER STORY >** Sykes were recently approached by a large North Queensland mining company to supply a Pontoon Mounted Pumpset to fill their 110,000 litre water trucks at a fast enough rate to ensure the trucks keep up with the ongoing requirement of dust suppression for the mine site.

Sykes' solution was a CP300i Pumpset vertically mounted in a Steel Wet Well Pontoon and driven by 90kw six pole electric motor. The 110,000 litre water trucks take only five minutes to fill at the supplied flow rate of 367 litres per second.

The pontoon is rated to accommodate two persons should you need to board the pontoon to carry out routine maintenance checks.

This pontoon set-up has superseded the old pump gravity feed tank method. This method saw, at times, two trucks waiting while another was filling up due to the slow fill rate of that system. This is now a thing of the past thanks to the CP300i.



**Should you require any further details regarding Sykes Truck Fill Pumpsets or any of the other Sykes Products please consult your local Sykes representative or contact [sykesgroup.com](http://sykesgroup.com)**

## Sykes Group & Power Prime Pumps

Sykes Group has been working with our USA distributor Power Prime Pumps since 1994 and they have been instrumental in assisting Sykes to sell and rent our pumps throughout America.

Our new CP150i has been a very popular pump in the American market due to the high performance, and high efficiency. The Sykes CP150i has a best efficiency of 81% and can save our customers up to 400 litres of fuel per month.

The CP150i comes complete with stainless steel internals as standard. Our 316 stainless steel impeller and wear plates have superior corrosion resistance when compared to straight chromium steel alloys. Corrosion resistance is an important factor in most pump applications where the liquid being pumped can be saline or have a wide pH range.



Sykes staff Con Bugden and Mike Brewer inspect 6" pumpends delivered to Power Prime Pumps.

## MATADOR THE SOLUTION

**Sykes Group was recently approached to provide a solution for Craig Lund of Lund Constructions to empty a Golf Target Range lake, so that construction could begin on the extension to a major shopping centre on the Gold Coast.**

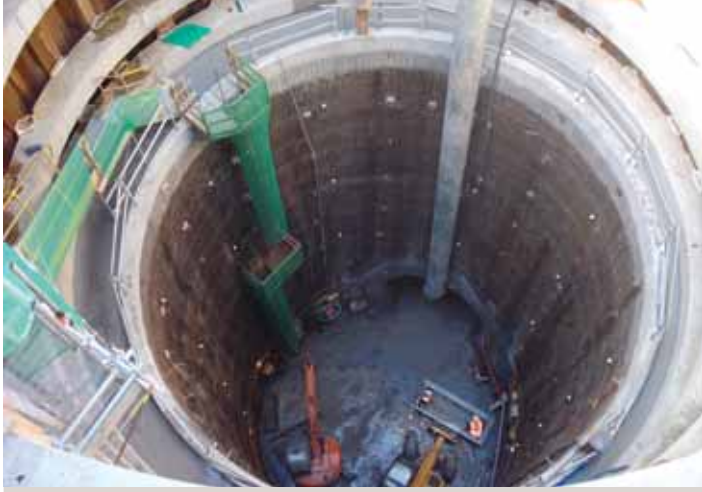
Sykes supplied a Grindex Matador N Pump which was suspended from a floating pontoon to transfer the water from a 200m x 200m lake to another location at a flow rate of 70 l/sec.

Craig Lund, Managing Partner said he was extremely happy with the pumps performance, efficiency and quietness. He has since used other Grindex Pumps on other projects involving Lund Constructions.



**For more information contact your local Sykes Branch. Sykes Group are the Australian distributors for Grindex pumps.**





# GRINDEX

## The ONLY choice for New Zealand's leading contractors

The New Zealand construction industry is in the middle of another boom and the Sykes Group New Zealand team has been extremely busy supplying dewatering equipment to assist with many major projects underway across the country.

Focusing on our backyard, over the last few months the four largest constructors and civil engineering companies in New Zealand have added more Grindex product to their sites and capital equipment base. For over ten years the New Zealand region of Sykes Group has been introducing Grindex to the New Zealand market.

When talking about Grindex, words like dependable, sturdy and efficient come to mind. Supported by the Sykes Group network, customers know that Grindex products offer trouble free pumping with longer life and a small footprint in confined areas, as well as having the ability to run dry combined with built in starters.

A quick snap-shot of three major sites in the Auckland CBD shows a good selection of the Grindex Drainage range in action. Multiplex Construction (80 Queen Street) and Hawkins Construction (Westpac Tower, Customs Street) have major and minor pumps established in the basements of both sites that require pumps to handle site water, sandstone slurry and at times tidal seawater.

Just to the east of the CBD is a joint venture between McConnell Dowell Constructors and Fletcher Construction. Project Hobson is an upgrade of sewage infrastructure facilities and will handle 25% of Auckland's sewer for the client Watercare Services. The majority of the work involves the design and build of a 3.5 kilometre tunnel 3.7m in diameter at a depth of 37m from ground level. The history of service and support Sykes Group has had over the years with McConnell Dowell and Fletchers made the decision to select Grindex an easy one for both companies.

The picture above shows Grindex Midi H & Grindex Master H units in adjacent shafts at the commencement of the project. Both pumps are handling abrasive slurries, site run-off and ground water seepage.

## Sykes XH150

Recently the Newcastle team commissioned a Sykes XH150 at a Hunter Valley Mine site. Pictured are Jason Davidson and Sam Collins who together with Chris Molloy carried out training and commissioning to ensure correct operational procedures are followed. Jason and Chris also reviewed the total pump system to ensure all dewatering calculations were correct.



The Sykes pump set is fitted with a Murphy IGuard engine management PLC. It also includes an Allen Bradley PLC, with a panel view plus screen, to monitor all vital information including Engine Status, sump level, flow rate, fuel level, pump pressures and more, which is all accessible from the control panel or control room. The Sykes XH150 will start and stop automatically or manually via the control panel and also via a remote call to run from the control room.

Due to the impact water can have on mining and how critical this pump is to the operation, the Sykes XH150 was selected for its reliability, unmatched suction lift and performance as well as the service and support provided by the Sykes Team.



**Ask your local Sykes representative for a custom built pump set to suit your needs.**

## 2008 Expos

Sykes Group would like to extend an invitation our customers and their colleagues to visit us at one of the expos we will be attending this year. It is a great opportunity to view new products and catch up with our staff. We look forward to seeing you there!

**Civil Works Expo** 15 – 17 February  
[www.lardnerpark.com.au](http://www.lardnerpark.com.au)

**CivEnEx** 22 – 24 May  
[www.civenex.com.au](http://www.civenex.com.au)

**QME** 22 – 24 July  
[www.qme.reedexhibitions.com.au](http://www.qme.reedexhibitions.com.au)

**GME** 28 – 30 October  
[www.gme.reedexhibitions.com.au](http://www.gme.reedexhibitions.com.au)



**CIVIL WORKS EXPO** 

# Africa:

Sykes takes relationships with clients to a new level

**Sykes Group takes the concept of 'customer for life' very seriously and this was recently demonstrated in Africa.**

First stop for Colin Bracken, Regional Manager – Africa and Eddie Kirby a service engineer for Western Australia was to Tanzania to re-build an XH150 pump set coupled to a Volvo engine at a local mine. The unit had been primarily assembled in Dubai and then stripped down to accommodate for airfreight to Tanzania.

In order to provide a complete service solution both Colin and Eddie also accommodated the customer by assisting them with information related to pumps and operating procedures. This will allow the client to effectively and efficiently operate all their Sykes pumps.

Whilst on-site Colin and Eddie took the opportunity to assist with a repair to an XH100 as well as implement another XH100 on skid.

Next stop for the pair was Ghana in West Africa where they conducted an intensive practical and theoretical one week training session for the maintenance and operational staff involved with a local mining project. This training will be repeated in the New Year at the request of the client.

To further add value for the client, Colin and Eddie conducted a thorough survey and assessment of the condition of the pumps they have on site and provided them with a comprehensive report.

Sykes Group is committed to forming strong relationships with their customers and provides practical and functional solutions for any situation.



## Experience in Dubai

**Primax Pumps, a division of Sykes Group, has now been operating in the UAE for six years. The division has grown from a regional sales office, into a second manufacturing facility for Sykes Group, housing all aspects of the UAE team including engineering, manufacturing, warehousing, accounts and sales.**

Sykes Group/Primax Pumps have been supplying pumps, hoses and wellpoint dewatering equipment to the Middle East for various projects since 2001. During that time Sykes Group's solutions have continued to evolve and progress in order to provide the best solution for each job.

A large number of pumps and associated equipment have been dewatering in the region over the past six years, due to the robust construction of the Sykes Primax Pumps. Despite the harsh nature of the environment, the pumps continue to perform over and beyond the expectations of our customers. Manufactured with stainless steel internals as standard and the option of a complete stainless steel construction our pumps are designed with longevity and life cycle costs in mind. Add to that the high efficiency of the pumps, improved flow rates and fuel consumption, it is easy to see why there is no other choice but a Sykes Primax Pump.

From our wellpointing experience in the region, we have developed our own dewatering header pipe system and valving systems that are perfectly suited for projects in the Middle East. The Sykes Primax wellpoint dewatering system is one of the most efficient on the market, allowing for the ease of setup and removal as well as simple operation. The system is lightweight and robust, with control valves which permit consistent trimming of the system to ensure optimum dewatering performance.



**Should you require any dewatering advice or information contact your local Sykes Primax representative.**



# Distributor of the Year 2006/07

**Sykes Group celebrated their 40th anniversary in 2007. To commemorate this important occasion the inaugural "Sykes Group Distributor of the Year" Award.**

This prestigious annual award recognises the highest-performing company from its global distributor network, which operate in USA, Indonesia, Singapore, UK, South Africa, UAE, Kuwait, Qatar, India.

Sykes Group Managing Director Jon Collins said that the award was long overdue.

"This award was introduced to recognise the essential contributions a distributor makes to our business," said Mr Collins.

"We know that the success of the Sykes Group is in no small part due to the success of our distributors."

"We are proud to announce that PT Trakindo Utama, Indonesia and Singapore, is the inaugural Sykes Group Distributor of the Year 2006/2007."

In 2000, Sykes Group appointed PT Trakindo Utama as their exclusive distributor for Indonesia and Singapore, due to their active involvement in the municipal, oil and gas and mining sectors throughout the region.

PT Trakindo are singularly the largest Caterpillar USA dealer network worldwide with equipment sales such as earthmoving, power generation, marine and stationary engines. Their dealer network throughout the Indonesian archipelago consists of 65 branches offering sales, service and rental facilities.

The synergy between Trakindo and Sykes Group has developed over the period of time displaying the compliment of Sykes quality pump ends with Caterpillar diesel engine power packs. As a result of continued market response and both companies adoption of increasing customer satisfaction, a new standard of diesel drive pump sets has been introduced into the market – setting the standard for our competitors to follow.

The financial year 06/07 has been a particularly rewarding year due to a greater focus of Trakindo sales and marketing staff seeking new markets for Caterpillar affiliated products. PT Trakindo grew their business by an astounding 40% over and above that achieved in the previous financial year. New sales have been achieved with some of the countries largest mining contractors standardising on their dewatering and transfer pump needs. Coupled with this has seen the increased growth in the rental market, and Trakindo's Rental Stores commitment to the Sykes product across the range from contractor transfer pumps to high head dewatering pumps and specialised dredging systems.

Apart from equipment sales, PT Trakindo has also made a concerted effort to streamline their in-country spare parts service and support available throughout the archipelago.

Congratulations to all at PT Trakindo for their loyal support during the past twelve months which is a result of their tenacious will to maintain their focus on customer service and support.



Pictured above are (from left) Mario Agung, Industrial Sales Executive (Power Systems Division); Egi Virgiantoro, Major Account Manager (Power Systems Division); Ivan Tulong, General Manager Kalimantan (PT Trakindo Utama); Ali Alhabsyi, Director (PT Trakindo Utama); Mike Brewer, Regional Manager Indonesia (Sykes Group); Steve Kilgallon, General Manager (Power Systems Division).

# SAFEWAY & ROADS SAFE

Making New Zealand's Roads SAFE!

**Sykes Safeway in New Zealand recently assisted Roadsafe in creating a safer worksite for their employees and the public through the purchase of six Solingo VMS boards.**

Roadsafe is one of the largest privately owned company's in Auckland, specialising in traffic control, to the roading construction fraternity. With the acquisition of the six Solingo VMS boards, this makes Roadsafe one of the first companies to implement the use of such technology in and around the day to day management of a road work site in New Zealand.

Roadsafe has had great success, with positive feedback from staff and public, since the introduction of the Solingo VMS. Their strategy has been to not only use the Solingo during the project, but the introduce its use prior to commencement of work, advising the public of the start date and expected delays giving them time to consider alternative routes and travel options.

Verbal comment from staff has let Roadsafe know that they made the right decision with feedback stating that the



worksites are much safer with lower speeds and indeed even fewer vehicles on the road.

Pictured is William Winchester, Safeway Product Manager, delivering the last two Solingo 1.8 VMS Boards to Kyle Dransfield of the Black Top Group.



**For more information on Safeway, please contact your local Sykes Group branch.**

## FREE SUBSCRIPTION

Please complete the following and fax back to **+61 2 4954 3303**

**Subscribe me to E-News**

Email \_\_\_\_\_

**Subscribe me to the Syked Up Newsletter**

Name \_\_\_\_\_

Position \_\_\_\_\_

Company \_\_\_\_\_

Postal Address \_\_\_\_\_

State \_\_\_\_\_

Post Code \_\_\_\_\_

Country \_\_\_\_\_

Telephone \_\_\_\_\_

Fax \_\_\_\_\_

Please tick appropriate boxes:

### Your industry

Engineering

Mining

Council

Government

Manufacture

Hire

Industrial

Contractor

Other ( please specify)

### Product of interest

Sykes Pumps

Portable Traffic Lights

Variable Message Signs

Speed Advisory Signs

Grindex Pumps

Dragflow Pumps

### Head Office & Manufacturing

42 Munibung Road  
Cardiff NSW AUSTRALIA 2285

**T** +61 (0)2 4954 3333,  
**F** +61 (0)2 4954 3303  
**E** info@sykesgroup.com

### SPARE PARTS & SERVICE

1800 13 19 50

### NEWCASTLE

+61 (0)2 4954 3333

### WESTERN NSW

0423 029 183

### BRISBANE

+61 (0)7 3382 7600

### NORTHERN QLD

+61 (0)7 4725 4244

### PERTH

+61 (0)8 9248 4944

### MELBOURNE

(VIC, SA, TAS, NT)

+61 (0)3 9543 2000

### AUCKLAND

+64 (0)9 278 8300

### CHRISTCHURCH

+64 (0)3 344 2100

### USA

+1 661 665 9495

### MIDDLE EAST

+971 4881 1599

### AFRICA

+27 (0)83 395 7377

### INDONESIA

+62 21 750 0080

### HONG KONG

+85 291 718 628